

**Driver LC 20W 350/500/700mA flexC SR ADV**

advanced series

**Product description**

- \_ Independent fixed output LED Driver
- \_ For luminaires of protection class I and protection class II
- \_ For luminaires with M and MM as per EN 60598, VDE 0710 and VDE 0711
- \_ Temperature protection as per EN 61347-2-13 C5e
- \_ Selectable output current between 350, 500 and 700 mA
- \_ Max. output power 20 W
- \_ Up to 85 % efficiency
- \_ Nominal life-time up to 50,000 h
- \_ 5-year guarantee

**Housing properties**

- \_ Casing: polycarbonate, white
- \_ Type of protection IP20

**Interfaces**

- \_ Terminal blocks: 0° screw terminals

**Functions**

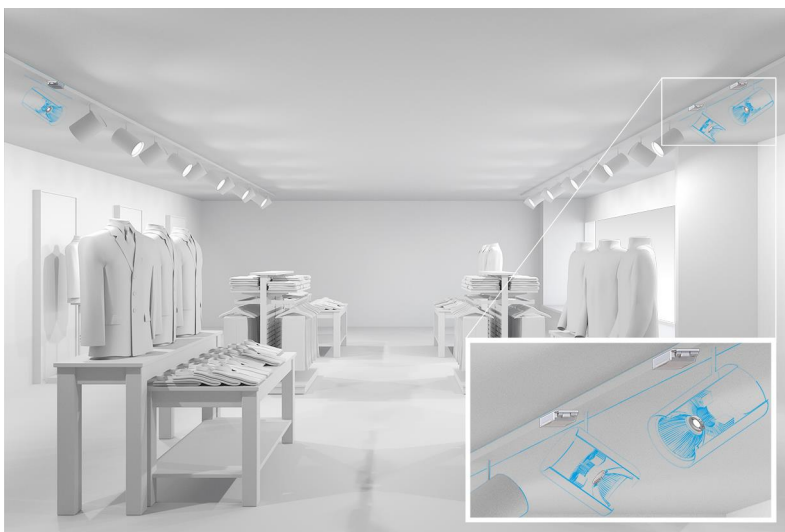
- \_ Overload protection
- \_ Short-circuit protection
- \_ No-load protection
- \_ Overtemperature protection
- \_ Burst protection voltage 1 kV
- \_ Burst protection voltage 1 kV (L to N)
- \_ Surge protection voltage 2 kV (L/N to earth)

**Typical applications**

- \_ For spot light and downlight in retail and hospitality applications
- \_ For panel light and area light in office and education application

**Website**

<http://www.tridonic.com/28002496>



Spotlights



Downlights



Linear



Area



Floor | Wall



Free-standing



Street



Decorative



High bay



## Specific technical data

Type	Output current <sup>①</sup>	Min. forward voltage	Max. forward voltage	Max. output power	Typ. power consumption (at 230 V, 50 Hz, full load)	Typ. current consumption (at 230 V, 50 Hz, full load)	Efficiency (at 230 V, 50 Hz, full load)	Efficiency (at 230 V, 50 Hz, min. load)	tc point max.	Ambient temperature ta
<b>LC 20W 350/500/700mA flexC SR ADV</b>	350 mA	25 V	50.0 V	17.5 W	21 W	100 mA	85.0 %	78 %	80 °C	-20 ... +50 °C
<b>LC 20W 350/500/700mA flexC SR ADV</b>	500 mA	20 V	40.0 V	20.0 W	24 W	110 mA	83.5 %	78 %	85 °C	-20 ... +50 °C
<b>LC 20W 350/500/700mA flexC SR ADV</b>	700 mA	14 V	28.5 V	20.0 W	24 W	110 mA	82.0 %	75 %	85 °C	-20 ... +50 °C

① Test result at 700 mA.

② Output current is mean value.

③ Test result at 25 °C.